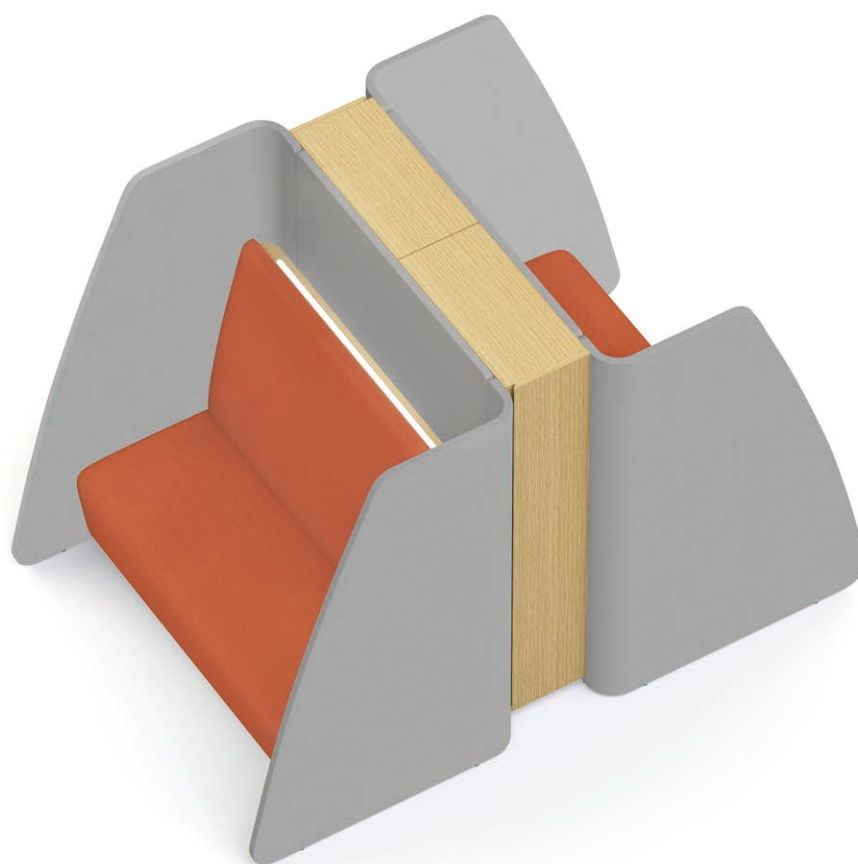


Coves Sofa



Product 产品	Width 宽度 (mm)	Depth 深度 (mm)	Height 高度 (mm)	Color 颜色	Material 物料
Island Sofa, Single 岛式沙发, 单人位	950	1,000	1,600	57 Fabric Colors Options 57 种布料颜色	Fabric 布料
Island Sofa, Double 岛式沙发, 双人位	1,500				
Window Sofa, Single 窗边沙发, 单人位	1,080	1,000	1,600		
Window Sofa, Double 窗边沙发, 双人位	1,630				
Roof 屏风顶	950/1500	940	525		
Power (1P2U) 电源 (1P2U)	150	45	69	Black (BK) 黑色	-
Closet 储物柜	300	600	1600	White Oak Veneer (VRO), Walnut Veneer (VRW) and 9 MFC Color Option 白橡木皮·胡桃木皮及9组 三聚氰胺板颜色选择	Natural Veneer and MFC 天然木皮及三聚氰胺板





Island Sofa, Single
岛式沙发, 单人位



LED Light Panel
LED 灯板



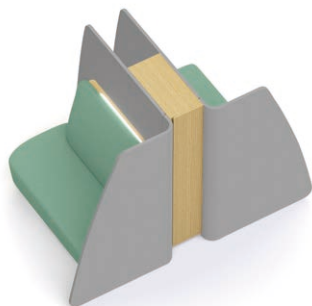
Window Sofa, Double
窗边沙发, 双人位



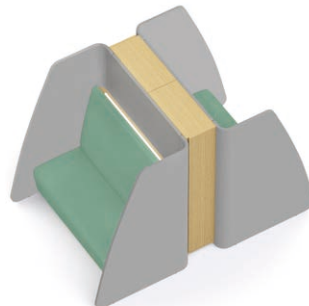
Island Sofa, Double
岛式沙发, 双人位



Island Sofa with Roof, Double
岛式沙发带屏风顶, 双人位



Window Sofa with One-sided Closet, Double
窗边沙发带单边储物柜, 双人位



Island Sofa with Two-sided Closet, Double
岛式沙发带双边储物柜, 双人位

Material Option 物料选择

Seat Fabric 座椅布料

Era

							
Calendar (CSE19)	Date (CSE24)	Turn (CSE26)	Experience (CSE29)	Lifetime (CSE03)	Notation (CSE36)	Rest (CSE37)	Signature (CSE35)

Youth

							
Youth (CSE39)	Late (CSE43)	Aeon(CSE20)	Chapter (CSE08)	Maturity (CSE40)	Present (CSE13)	Generation (CSE02)	Prompt (CSE45)

Medley

							
63016 (MD09)	64102 (MD29)	68070 (MD32)	66144 (MD30)	66010(MD17)	66008 (MD15)	60167 (MD23)	60999 (MD03)

Rivet

							
Molten (EGL09)	Forge (EGL12)	Woodrose (EGL33)	Hemlock (EGL34)	Tensile (EGL20)	Quench (EGL23)	Crucible (EGL24)	Gaivanise (EGL26)

Blazer

							
Stanford (CUZ2R)	Barlborough (CUZ3D)	Goldsmith (CUZ39)	Scottsdale (CUZ3E)	Barnard (CUZ2S)	Latymer (CUZ33)	Woodcroft (CUZ2Z)	Marymount (CUZ3C)

				
Cardiff (CUZ1N)	Glenalmond (CUZ62)	Bromsgrove (CUZ35)	Fairfield (CUZ47)	Surrey (CUZ1E)

MFC 三聚氰胺板

				
Warm White (MFH) 暖白色	Aspen (MSFS) 白杨木	Maple (MFP) 枫木色	Sunlight Ash (MFAS) 晨光白蜡木	Oak (MFLO/COLOR310) 橡木色

Natural Veneer 天然木皮

	
White Oak Veneer (VRO) 白橡木皮	Walnut Veneer (VRW) 胡桃木皮

			
Cherry (MFY) 樱桃木色	Walnut (MFLW/COLOR309) 胡桃木色	Vintage Ash (MFAV) 复古白蜡木	Chocolate Ash (MFAC) 巧克力白蜡木

Remarks 备注:

Color variations may occur on soft copies or printed matters. Please refer to swatch cards or actual product samples for color selection.

颜色可能因电子档或印刷效果而出现差异，当选择颜色时，可参考色卡或真实样本。

More material color options of Medley and Rivet are available for selection in Lamex Colorbook.

Medley及Rivet备有更多物料颜色选择，可参考美时彩集。



Office & Showroom 分行及展厅

Shanghai 上海
Tel: (86) 21 6278 8888

Beijing 北京
Tel: (86) 10 8521 7588

Guangzhou 广州
Tel: (86) 20 3892 2422

Shenzhen 深圳
Tel: (86) 769 8203 1018

Dongguan 东莞
Tel: (86) 769 8203 1111

Hong Kong 香港
Tel: (852) 2828 6888

Singapore 新加坡
Tel: (65) 6817 8750

Customer Service Hotline 客户服务热线

Mainland China 中国大陆
Tel: (86) 800 820 6073 | (86) 400 686 8073

Hong Kong & Asia Pacific 香港及亚太区
Tel: (852) 2828 6000

www.lamex.com