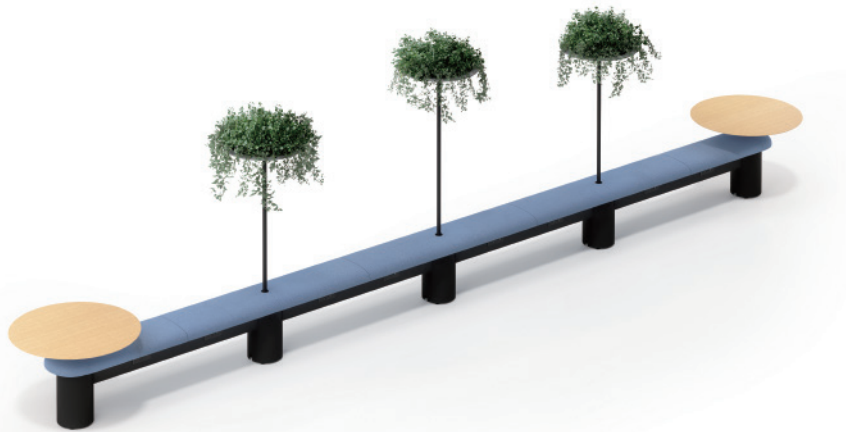


# Pier



Product 产品	Category 类别	Width 宽度 (mm)	Depth 深度 (mm)	Height 高度 (mm)	Color 颜色	Material 物料
Seat Pad 坐垫	Circular End Seat Pad (L / R) 圆形边位坐垫 (左 / 右)	1,020	790	60	6 Color Palette Fabric Option 6 组色系布料选择	Fabric 布料
	Circular Mid Seat Pad 圆形中间位坐垫	1,820	620	60		
	Linear End Seat Pad 直线形边位坐垫	1,010	400	60		
	Linear Mid Seat Pad 直线形边中间位坐垫	1,400 1,600	400	60		
Cable Trunk 走线槽	Round Cable Trunk (2 / 4 Socket Holes) 两孔 / 四孔圆线槽	1,550	290	150	Clay (CL), Ink Black (BL) 灰凝土 · 墨黑	Powder Paint 金属喷粉
	Linear Cable Trunk (2 / 4 Socket Holes) 两孔 / 四孔直线槽 1,400 / 1,600	1,270 1,470	280	150		
Leg 脚	End / Mid Leg 边位/中间脚	250	250	390		
Canopy 绿植华盖	1,600 / 1,800	600	600	1,600 1,800		
Round Table 圆形桌台	750 / 900 (with / without Wireless Charge Hole ) (带 / 不带 线充孔)	750 900	750 900	650	White Oak Veneer (VRO), Walnut Veneer (VRW) 白橡木皮 · 胡桃木皮	Natural Veneer 天然木皮
Power 电源设备	1 Plug , 1 USB-A, 1 USB-C China / UK in series 1 Exposed Wireless Charge, 2 USB-A China / UK in series 插座, USB-A和USB-C各一个 (中国 / 英国标准插头) 外置式 线充一个, USB-A 两个 (中国 / 英国标准插头)	—	—	—	Black 黑色	—



Linear Pier with Round Table and Canopy

直形Pier附圆形桌台和绿植华盖



Circular Pier with Canopy  
圆形Pier附绿植华盖



Socket Plug with USB-A / USB-C  
串联插座带USB插头



Circular Pier with Round Table and Canopy  
圆形Pier附圆形桌台和绿植华盖

## Material Option 物料选择

### Seat Fabric 座椅布料

#### Era

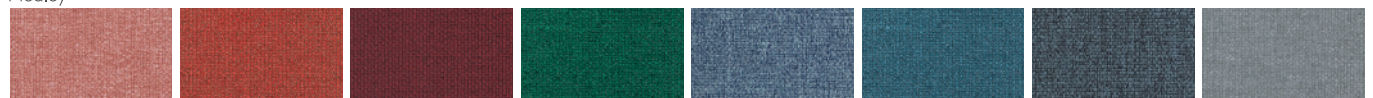


Calendar (CSE19)   Date (CSE24)   Turn (CSE26)   Experience (CSE29)   Lifetime (CSE03)   Notation (CSE36)   Rest (CSE37)   Signature (CSE35)

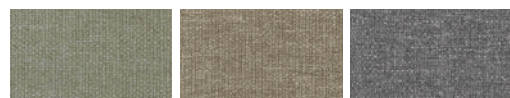


Youth (CSE39)   Late (CSE43)   Aeon (CSE20)   Chapter (CSE08)   Maturity (CSE40)   Present (CSE13)   Generation (CSE02)   Prompt (CSE45)

#### Medley



63064 (MD27)   63016 (MD09)   64102 (MD29)   68070 (MD32)   66144 (MD30)   67053 (MD31)   66010 (MD17)   66008 (MD15)

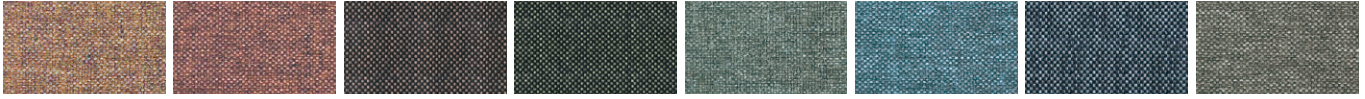


60003 (MD01)   61002 (MD04)   60167 (MD23)

## Material Option 物料选择

### Seat Fabric 座椅布料

#### Rivet



Molten (EGL09) Forge (EGL12) Woodrose (EGL33) Hemlock (EGL34) Tensile (EGL20) Quench (EGL23) Crucible (EGL24) Gaivanise (EGL26)



Grey Brindle (EGL50)

#### Blazer



Stanford (CUZ2R) Barlborough (CUZ3D) Goldsmith (CUZ39) Scottsdale (CUZ3E) Barnard (CUZ2S) Latymer (CUZ33) Woodcroft (CUZ2Z) Marymount (CUZ3C)



Cardiff (CUZ1N) Glentalmond (CUZ62) Bromsgrove (CUZ35) Fairfield (CUZ47) Surrey (CUZ1E)

#### Silex

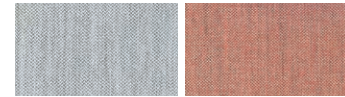


SX02 SX88 SX08 SX53 SX10



SX33 SX70 SX12 SX30

#### Vico



VC03 VC41



VC17 VC25

### Powder Paint 金属喷粉



Clay (CL) Ink Black (BL)  
灰凝土 墨黑

### Natural Veneer 天然木皮



White Oak Veneer (VRO) Walnut Veneer (VRW)  
白橡木皮 胡桃木皮

#### Remarks 备注:

Color variations may occur on soft copies or printed matters. Please refer to swatch cards or actual product samples for color selection.  
颜色可能因电子档或印刷效果而出现差异，当选择颜色时，可参考色卡或真实样本。



### Office & Showroom 分行及展厅

Shanghai 上海  
Tel: (86) 21 6278 8888

Beijing 北京  
Tel: (86) 10 8521 7588

Guangzhou 广州  
Tel: (86) 20 3892 2422

Shenzhen 深圳  
Tel: (86) 769 8203 1018

Dongguan 东莞  
Tel: (86) 769 8203 1111

Hong Kong 香港  
Tel: (852) 2828 6888

Singapore 新加坡  
Tel: (65) 6817 8750

### Customer Service Hotline 客户服务热线

Mainland China 中国大陆  
Tel: (86) 800 820 6073 | (86) 400 686 8073

Hong Kong & Asia Pacific 香港及亚太区  
Tel: (852) 2828 6000