



# Liquid

Made To Measure 舒适柔韵 坐享贴心



## Aesthetic Appeal

惬意柔美 优雅呈现

Liquid chair presents a stylish design alongside sophistication and superb performance. With its seating's soft curves and pleasing contours, it offers visual aesthetics that match any workplace.

Liquid 座椅将时尚雅致的设计与精致优越的功能融为一体。柔美流畅和令人愉悦的曲线造型使它在任何办公场所都能彰显协调之美。



## Cross-Purpose Chair for Collaboration

变换灵活 协作自如

Interact, brainstorm and create, through Liquid's unrestricted movements. Cross-functional interaction fosters collaboration through a myriad of different settings in any office.

无论是相互交流、头脑风暴还是共同创作，Liquid座椅通过灵动便捷的移动，轻松穿梭于不同办公空间。Liquid座椅具有多种配置，能满足在任何办公场所部门之间相互协作的需求。



## Enduring Comfort to Enhance Health

天生舒适 健康优雅

Gentle back curves allow for flexible and customized comfort, allowing for a range of dynamic seating postures. With its height-adjustable workstation, Liquid enhances a healthy work life.

柔美流畅的曲线椅背造型让身体随时保持贴心舒适，完全切合动态坐姿的需求，体验非同一般的舒适感受。Liquid 座椅与升降台可相互搭配使用，为您带来更健康的工作模式。



## Mental and Physical Wellbeing

身心愉悦 座享舒畅

Liquid's intuitive ergonomic frame and high-performance functionality puts health at the forefront. Stressful work settings are replaced by fresh ideas and focused concentration.

无论是符合人体工学的外观设计还是睿智的功能设计，Liquid座椅在设计中始终将人体的健康舒适放在至关重要的考虑。Liquid让您在工作时专心致志、创意无限，轻松将紧张繁忙的工作氛围缓解，令您身心愉悦、畅享办公。

# Product Highlight

产品特点



Comfortable Headrest  
贴心舒适的头枕

Adjustable Armrest  
可调节扶手

Seat Height Adjustment  
座椅高度调节

Adjustable Lumbar  
可调节靠背

Seat Depth Adjustment  
座椅深度调节

Tilt Lock  
倾仰锁定



### Comfortable Headrest

贴心舒适的头枕

Specially-designed headrest offers comfort and support to relieve neck tension.

匠心设计的头枕能为您提供合适的头部支撑和舒适度，有助纾解颈部承受的压力。



### Adjustable Back Support

可调节的腰支撑

Ergonomic design for lumbar support that adjusts to spinal curves and contours, relieving back pressure.

贴合人体工学的腰支撑设计，可根据脊柱弯曲进行调整，贴合腰椎曲线，有助纾解您的背部承受压力。



### Flexibly Adjustable Arms

活应变的可调节扶手

Adjustable arms move up and down, forward and backwards, in and out, left and right, for an exceptional fit.

可调节扶手提供上下、前后、内外和左右转向角度调节，使您获得更佳舒适贴合感。



### Weight Activated Synchronized Mechanism

自重力倾仰机关

Weight Activated Synchronized mechanism allows for easy recline, adjusting to different angles with the tension lock.

自重力倾仰机关可轻松让座椅倾仰调节至您需要的不同角度，让身心压力得到释放。



### Adjustable Seat Depth

可调节的座椅深度

Seat depth moves forwards or backwards up to 5.3 cm, easily adjustable for ideal enduring comfort.

座椅深度可向前或向后轻松调节至 5.3 厘米，让您获得理想和持久的舒适座感。

# Statement of Line

产品线



Liquid  
with Adjustable Armrest  
配可调节扶手

Mechanism 机关	Weight Activated Synchronized Mechanism 自重力倾仰机关
Frame Color 框架颜色	Black/Light Grey 黑色/浅灰色
Height 椅高	1010mm - 1105mm
Depth 椅深	690mm
Width 椅阔	690mm
Seating Height 座高	450mm - 545mm
Seating Depth 座深	460mm
Seating Width 座阔	475mm

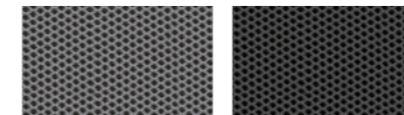


Liquid  
with Headrest & Adjustable Armrest  
带头枕 / 配可调节扶手

Mechanism 机关	Weight Activated Synchronized Mechanism 自重力倾仰机关
Frame Color 框架颜色	Black/Light Grey 黑色/浅灰色
Height 椅高	1160mm - 1255mm
Depth 椅深	690mm
Width 椅阔	690mm
Seating Height 座高	450mm - 545mm
Seating Depth 座深	460mm - 500mm
Seating Width 座阔	475mm

## Material Option 物料选择

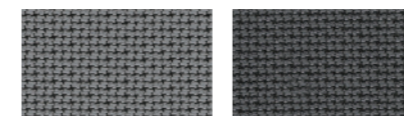
### Back Mesh 椅背网布



Light Grey  
(K2)  
天空灰

Midnight Black  
(K6)  
暗夜黑

### Seat Fabric 座布布料



Light Grey  
(LS811)  
天空灰

Midnight Black  
(LS806)  
暗夜黑

### Remark备注:

Color variations may occur on soft copies or printed matters. Please refer to swatch cards or actual product samples for color selection. 颜色可能因电子档或印刷效果而出现差异，当选择颜色时，可参考色卡或真实样本。

## Office & Showroom

## 分行及展厅

### Shanghai

8/F, Greentech Tower,  
No. 436 Hengfeng Road, Jingan District,  
Shanghai 200070  
Tel: (86) 21 6278 8888

### 上海

上海市静安区恒丰路436号  
环智国际大厦8层  
邮政编码: 200070  
电话: (86) 21 6278 8888

### Beijing

Room B15-1, B15-2, B15-3, 15/F,  
Building B, Guanghualu SOHO II,  
No. 9 Guanghua Road,  
Chaoyang District, Beijing 100020  
Tel: (86) 10 8521 7588

### 北京

北京市朝阳区光华路9号  
光华路SOHO二期B座  
15层B15-1, B15-2, B15-3室  
邮政编码: 100020  
电话: (86) 10 8521 7588

### Guangzhou

Unit 2, 22/F, Jun Lin Building,  
No. 285 Forest and East Road, Tianhe District,  
Guangzhou, Guangdong Province 510610  
Tel: (86) 20 3892 2422

### 广州

广东省广州市天河区林和东路285号  
峻林大厦22层02单元  
邮政编码: 510610  
电话: (86) 20 3892 2422

### Shenzhen

Unit 01, 6/F, Tower 1, Kerry Center Qianhai,  
Qianwan 1st Road, Qianhai Shenzhen-HongKong  
Cooperation Zone, Nanshan District,  
Shenzhen, Guangdong Province 518038  
Tel: (86) 769 8203 1018

### 深圳

广东省深圳市前海深港合作区  
南山街道前湾一路  
前海嘉里商务中心T1写字楼601室  
邮政编码: 518038  
电话: (86) 769 8203 1018

### Dongguan

191 Huan Shi East Road,  
Tangxia Town, Dongguan,  
Guangdong Province 523712  
Tel: (86) 769 8203 1111

### 东莞

广东省东莞市塘厦镇  
环市东路191号  
邮政编码: 523712  
电话: (86) 769 8203 1111

### Hong Kong

26/F, FOYER, 625 King's Road,  
North Point, Hong Kong  
Tel: (852) 2828 6888

### 香港

香港北角英皇道625号26楼  
电话: (852) 2828 6888

### Singapore

100H Pasir Panjang Road #05-03  
OC@Pasir Panjang Singapore 118524  
Tel: (65) 6817 8750

# Lamex

www.lamex.com

## Service Hotline

客户服务热线

### Mainland China

中国大陆  
(86) 800 820 6073  
(86) 400 686 8073

### Hong Kong & Asia Pacific

香港及亚太区  
(852) 2828 6000



Website 网站



WeChat 微信



Facebook 脸书



LinkedIn 领英

Design and specification are subjected to modification without prior notice due to continuous product improvement.

鉴于不断求进，产品规格后若有更改，恕不另行通知。