

Colony Ottoman



Product 产品	Diameter 直径 (mm)	Depth 深度 (mm)	Height 高度 (mm)	Fabric Color 布料颜色	Material 物料
Colony Ottoman 大圆凳	850 Ø	850	340	51 Fabric Color Options 51 种布料颜色	Fabric 布料



Colony Ottoman
大圆凳



Colony Ottoman
大圆凳



Colony 3 and Colony Ottoman
3层咖啡几和大圆凳组合

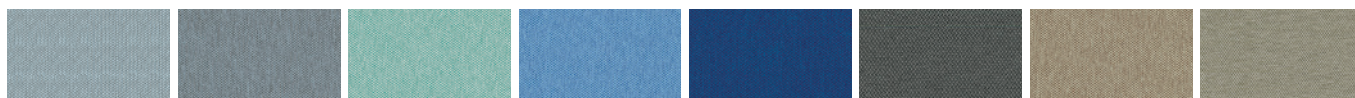
Material Option 物料选择

Seat Fabric 座椅布料

Era*

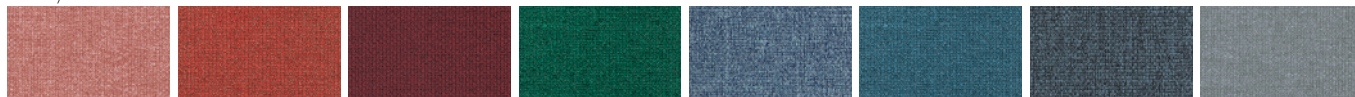


Calendar (CSE19) Date (CSE24) Turn (CSE26) Experience (CSE29) Lifetime (CSE03) Notation (CSE36) Rest (CSE37) Signature (CSE35)

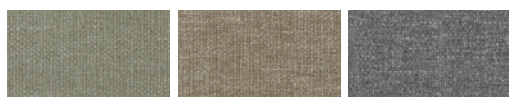


Youth (CSE39) Late (CSE43) Aeon (CSE20) Chapter (CSE08) Maturity (CSE40) Present (CSE13) Generation (CSE02) Prompt (CSE45)

Medley*



63064 (MD27) 63016 (MD09) 64102 (MD29) 68070 (MD32) 66144 (MD30) 67053 (MD31) 66010 (MD17) 66008 (MD15)



60003 (MD01) 61002 (MD04) 60167 (MD23)

Material Option 物料选择

Seat Fabric 座椅布料

Blazer



Stanford (CUZ2R) Barlborough (CUZ3D) Goldsmith (CUZ39) Scottsdale (CUZ3E) Barnard (CUZ2S) Latymer (CUZ33) Woodcroft (CUZ2Z) Marymount (CUZ3C)



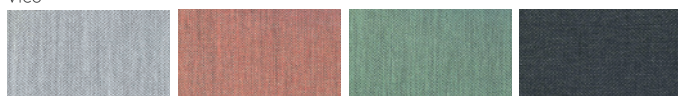
Cardiff (CUZ1N) Glensalmond (CUZ62) Bromsgrove (CUZ35) Fairfield (CUZ47) Surrey (CUZ1E)

Silex



SX02 SX88 SX08 SX53 SX10 SX70 SX30

Vico



VC03 VC41 VC17 VC25

Remark 备注:

Single color or dual color combination is available for options.

含单色及双色搭配，以供选择。

Color variations may occur on soft copies or printed matters. Please refer to swatch cards or actual product samples for color selection.

颜色可能因电子档或印刷效果而出现差异，当选择颜色时，可参考色卡或真实样本。



Office & Showroom 分行及展厅

Shanghai 上海
Tel: (86) 21 6278 8888

Beijing 北京
Tel: (86) 10 8521 7588

Guangzhou 广州
Tel: (86) 20 3892 2422

Shenzhen 深圳
Tel: (86) 769 8203 1018

Dongguan 东莞
Tel: (86) 769 8203 1111

Hong Kong 香港
Tel: (852) 2828 6888

Singapore 新加坡
Tel: (65) 6817 8750

Customer Service Hotline 客户服务热线

Mainland China 中国大陆
Tel: (86) 800 820 6073 | (86) 400 686 8073

Hong Kong & Asia Pacific 香港及亚太区
Tel: (852) 2828 6000

www.lamex.com